

# Smart safety solutions for cities incident prevention in digital age

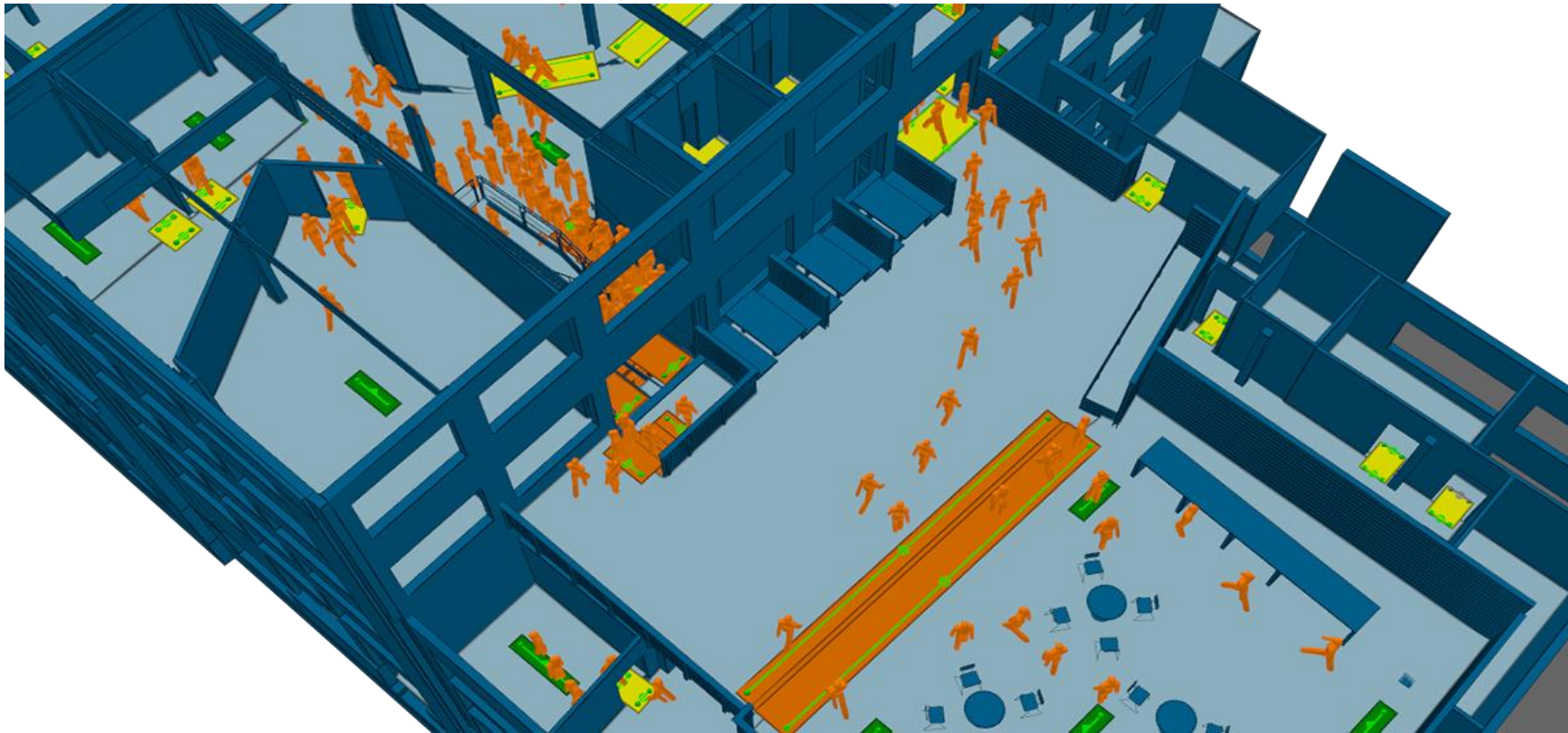


# BeeSafe



# Citizens living in smart cities

- **Citizen safety, soft target protection**
- Safety data and incident prevention
- Verification and Emergency response



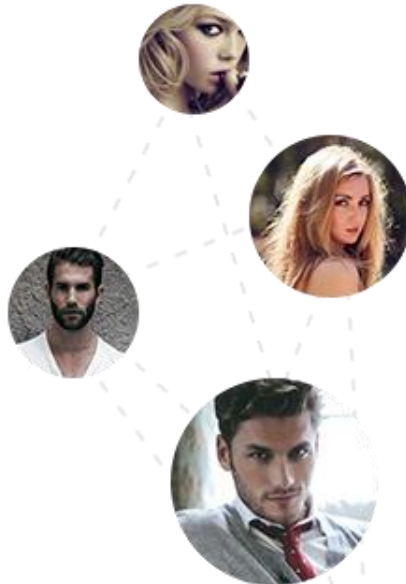
# Citizens working in smart factories

- **Employee safety and accident prevention**
- **Field communication during emergency**

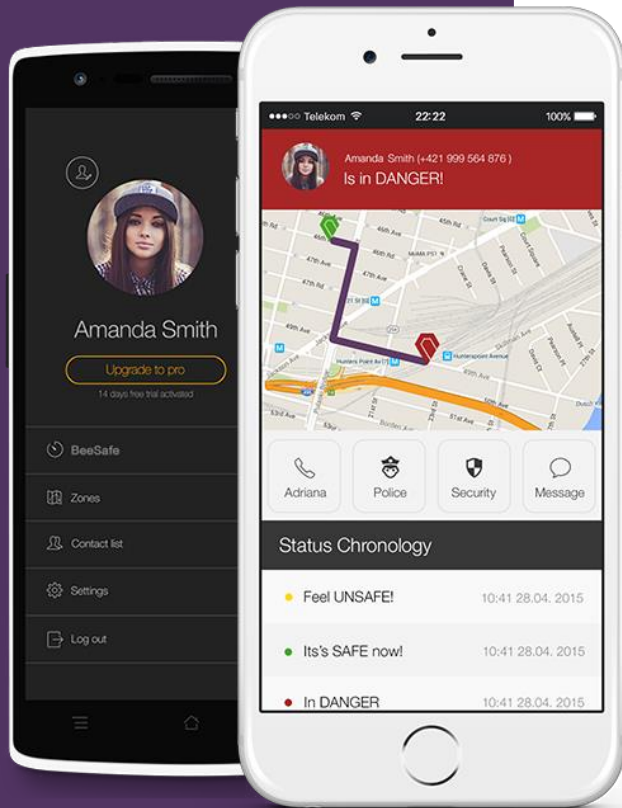


# Challenge

- **Automatic call for help**
- **Outdoor and indoor positioning**
- **False calls, audio and visual information**
- **Prioritized helpdesk**
- **Privacy**
- **Multilanguage**
- **No visual**
- **No signal**



# Automatic call for help



PREDEFINED  
CONTACTS



POLICE/  
SECURITY

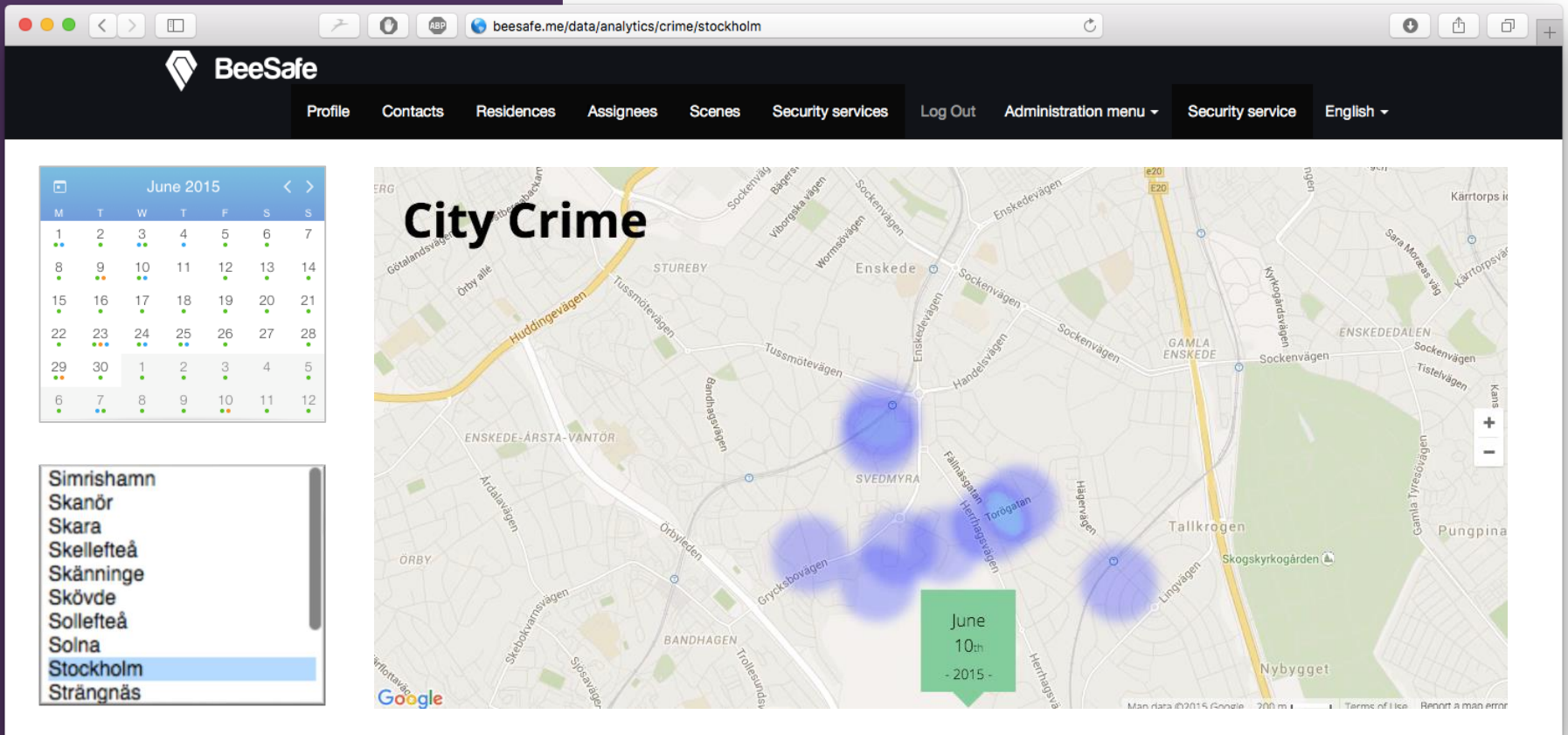


MONITORING  
CENTER (24/7)



INCIDENT  
PANEL

# Safety data evaluation



# Worldwide pilots

- **France**

Nice, Mougins and residential safety

- **Taiwan**

earthquake emergency response

- **Singapore**

vertical smart city safety

- **Kenya and Syria**

field operations support



# Summary

- [www.beesafe.me](http://www.beesafe.me)
- +421 948 220 309
- [contact@beesafe.me](mailto:contact@beesafe.me)

- Citizen protection
- Incident response time
- Emergency data and reporting

