



((SENSONEO))

SMART WASTE MANAGEMENT



SENSONEO provides smart enterprise-grade waste management solutions for cities and businesses to better manage the waste lifecycle for improved environment, health and safety



ADDED VALUE FOR OUR CUSTOMERS



CUSTOMER: Town Hlohovec

CLASS: Small Town; 40 000 citizens

WASTE COLLECTION: Join venture with FCC

ANNUAL BUDGET: 2 Million Euro

MISSION:

- Waste management optimisation
- Health and safety improvement

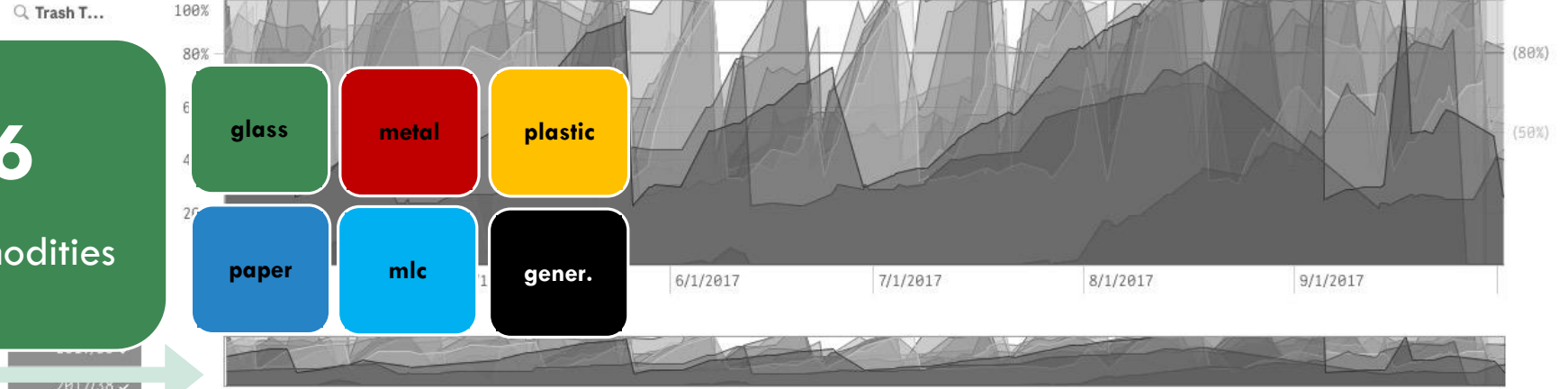
APPROACH: Pilot first (4 months)

((S))

BASIC STATISTICS

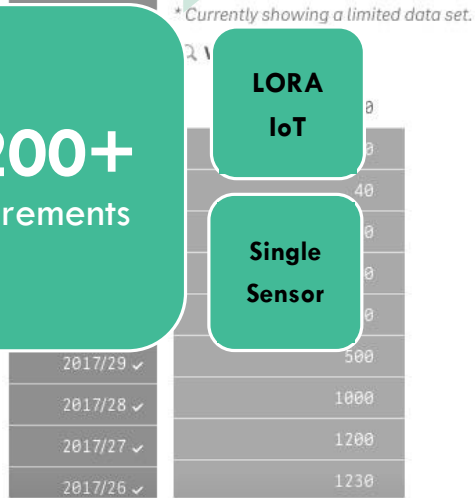
40
bins

6
commodities



375
picks
recognized

25200+
measurements



LORA
IoT

Single
Sensor

Containers
40

Picks
375

Streets



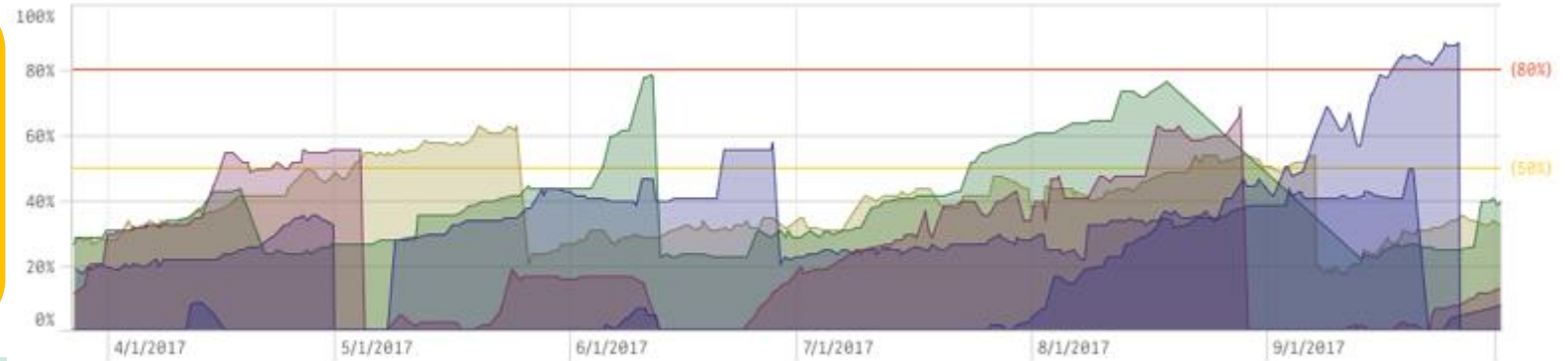
((S))

DETAIL ANALYSES GLASS

2 bins
frequently
over
average

50%
average
bin usage

1
MONTH
CYCLUS



Pod Beranom 10
ID:440 glass-1100
R.Dilonga 8
ID:430 glass-1100

RECOMMENDATION

- Decrease pick frequency by 50% or organize waste collection on demand based bin monitoring
- Increase capacity of selected "over average" bins

17/35



68.0%
68.0%

BENEFITS

- Increase service efficiency and optimize cost

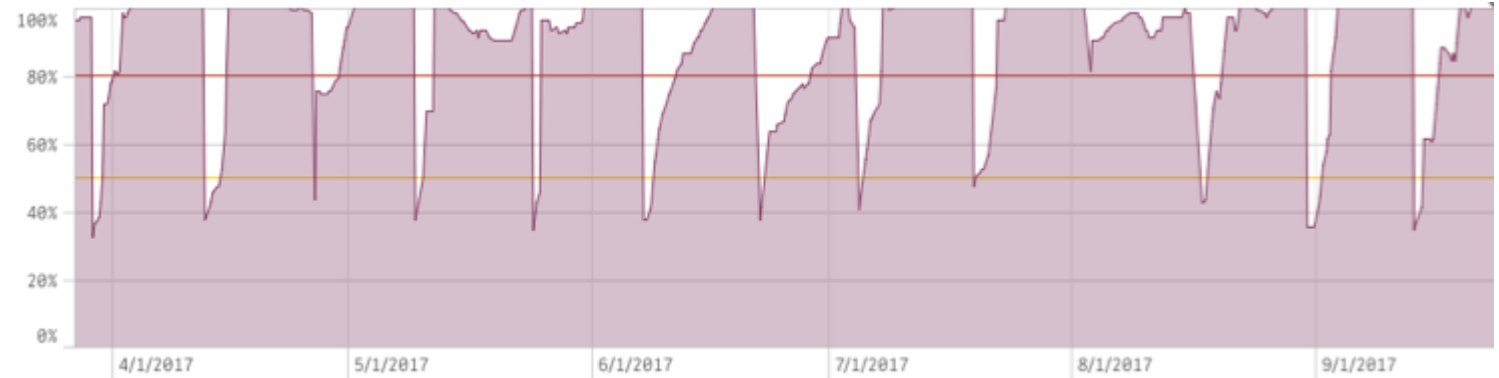
((S))

DETAIL ANALYSES PAPER

10+ days
no picks

100%
Capacity
usage

1 day
To full



ID:428 paper-1100
M.Bela 2
ID:446 paper-1100
ID:1530 paper-1100

RECOMMENDATION

- Increase bin capacity
- Adapt waste collection frequency

BENEFITS

- Decrease general waste collection by removing paper from general waste
- Improve quality of environment, health and safety

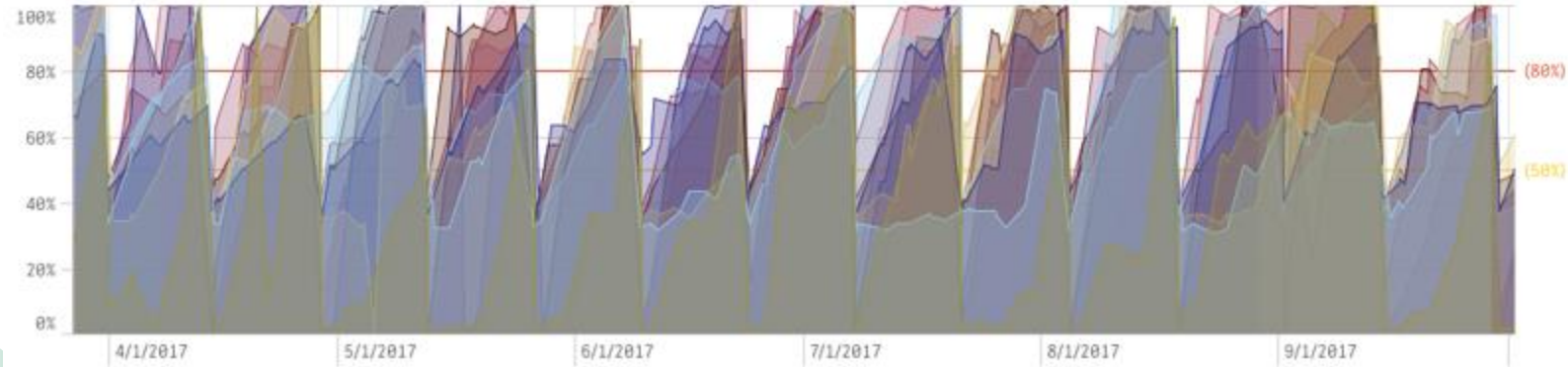
Mackovičová 1	100.0%	100.0%	100.0%	-	-	100.0%	-	99.0%	-
ID:451 paper-1100	100.0%	100.0%	100.0%	-	-	100.0%	-	99.0%	-
Pod Beranom 10	100.0%	100.0%	100.0%	-	100.0%	100.0%	-	100.0%	100.0%
ID:443 paper-1100	100.0%	100.0%	100.0%	-	100.0%	100.0%	-	100.0%	100.0%
R.Dilonga 8	99.5%	-	72.5%	-	100.0%	96.0%	-	100.0%	100.0%
ID:433 paper-1100	99.5%	-	72.5%	-	100.0%	96.0%	-	100.0%	92.0%

((S))

DETAIL ANALYSIS of PLASTIC

APPROPRIATE CAPACITY

Average bin capacity usage
95%



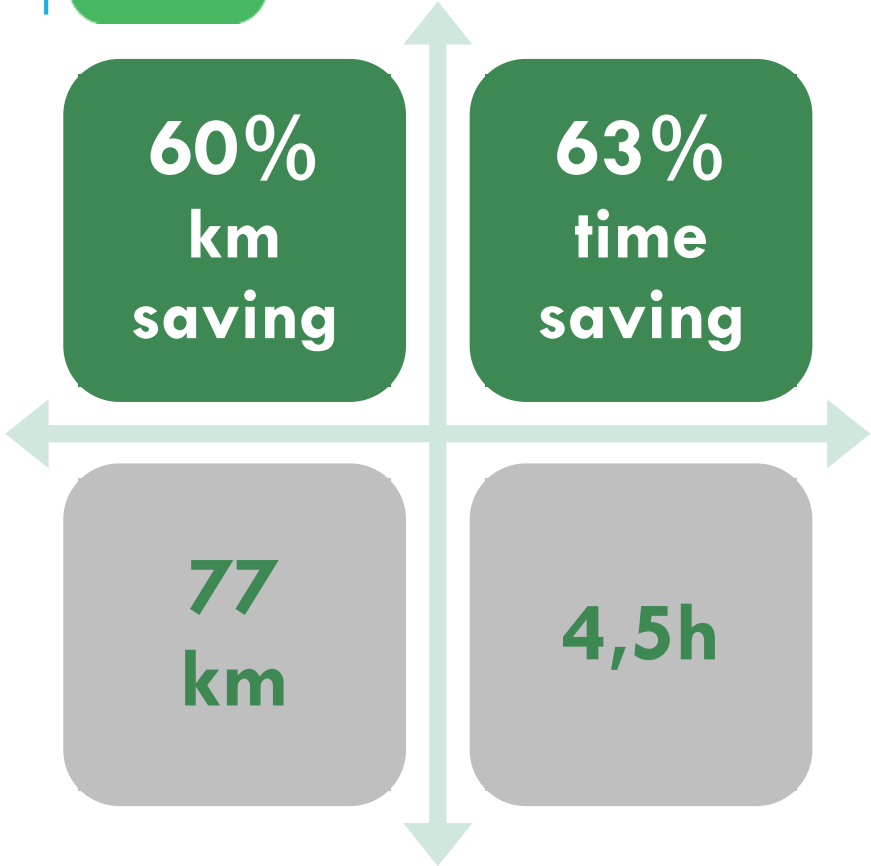
Gradual Filling

	2017/39	2017/37	2017/35	2017/33	2017/31	2017/29	2017/27	2017/25	2017/23	2017/21	2017/20	2017/19	2017/18	2017/17
Frašťacká 1	86.0%	100.0%	100.0%	100.0%	100.0%	100.0%	96.0%	100.0%	99.0%	100.0%	-	100.0%	-	100.0%
ID:437 plastic-1100	86.0%	100.0%	100.0%	100.0%	100.0%	100.0%	96.0%	100.0%	99.0%	100.0%	-	100.0%	-	100.0%
Hlohova 12	-	-	-	100.0%	72.0%	-	100.0%	-	100.0%	80.0%	-	88.0%	-	-
ID:420 plastic-1100	-	-	-	100.0%	72.0%	-	100.0%	-	100.0%	80.0%	-	88.0%	-	-
Hlohova 16	-	100.0%	-	97.0%	97.0%	94.0%	97.0%	-	100.0%	67.0%	-	70.0%	34.0%	100.0%
ID:424 plastic-1100	-	100.0%	-	97.0%	97.0%	94.0%	97.0%	-	100.0%	67.0%	-	70.0%	34.0%	100.0%
Hlohova 24	99.0%	100.0%	-	99.0%	99.0%	97.0%	100.0%	89.0%	100.0%	100.0%	-	99.0%	-	100.0%
ID:427 plastic-1100	99.0%	100.0%	-	99.0%	99.0%	97.0%	100.0%	89.0%	100.0%	100.0%	-	99.0%	-	100.0%
M.Bela 2	72.7%	91.5%	78.5%	91.0%	91.0%	87.5%	91.5%	93.0%	88.0%	93.0%	-	77.5%	45.0%	93.5%
ID:447 plastic-1100	88.0%	99.0%	-	95.0%	95.0%	88.0%	96.0%	99.0%	89.0%	99.0%	-	68.0%	-	99.0%
ID:1529 plastic-1100	65.0%	84.0%	78.5%	87.0%	87.0%	87.0%	87.0%	87.0%	87.0%	87.0%	-	87.0%	45.0%	88.0%
Mackovičová 1	99.0%	99.0%	99.0%	98.0%	98.0%	100.0%	99.0%	100.0%	100.0%	99.0%	-	96.0%	-	100.0%
ID:450 plastic-1100	99.0%	99.0%	99.0%	98.0%	98.0%	100.0%	99.0%	100.0%	100.0%	99.0%	-	96.0%	-	100.0%
Manckovičová 11-12	75.0%	91.0%	92.0%	93.0%	92.0%	90.0%	81.0%	93.0%	-	91.0%	-	82.0%	-	-
ID:454 plastic-1100	75.0%	91.0%	92.0%	93.0%	92.0%	90.0%	81.0%	93.0%	-	91.0%	-	82.0%	-	-
Pod Beranom 10	-	-	-	100.0%	100.0%	100.0%	100.0%	100.0%	100.0%	100.0%	100.0%	100.0%	-	100.0%
ID:442 plastic-1100	-	-	-	100.0%	100.0%	100.0%	100.0%	100.0%	100.0%	100.0%	100.0%	100.0%	-	100.0%
R.Dilonga 8	97.0%	71.0%	100.0%	93.0%	91.0%	100.0%	-	77.0%	89.0%	99.0%	-	97.0%	-	100.0%
ID:432 plastic-1100	97.0%	71.0%	100.0%	93.0%	91.0%	100.0%	-	77.0%	89.0%	99.0%	-	97.0%	-	100.0%



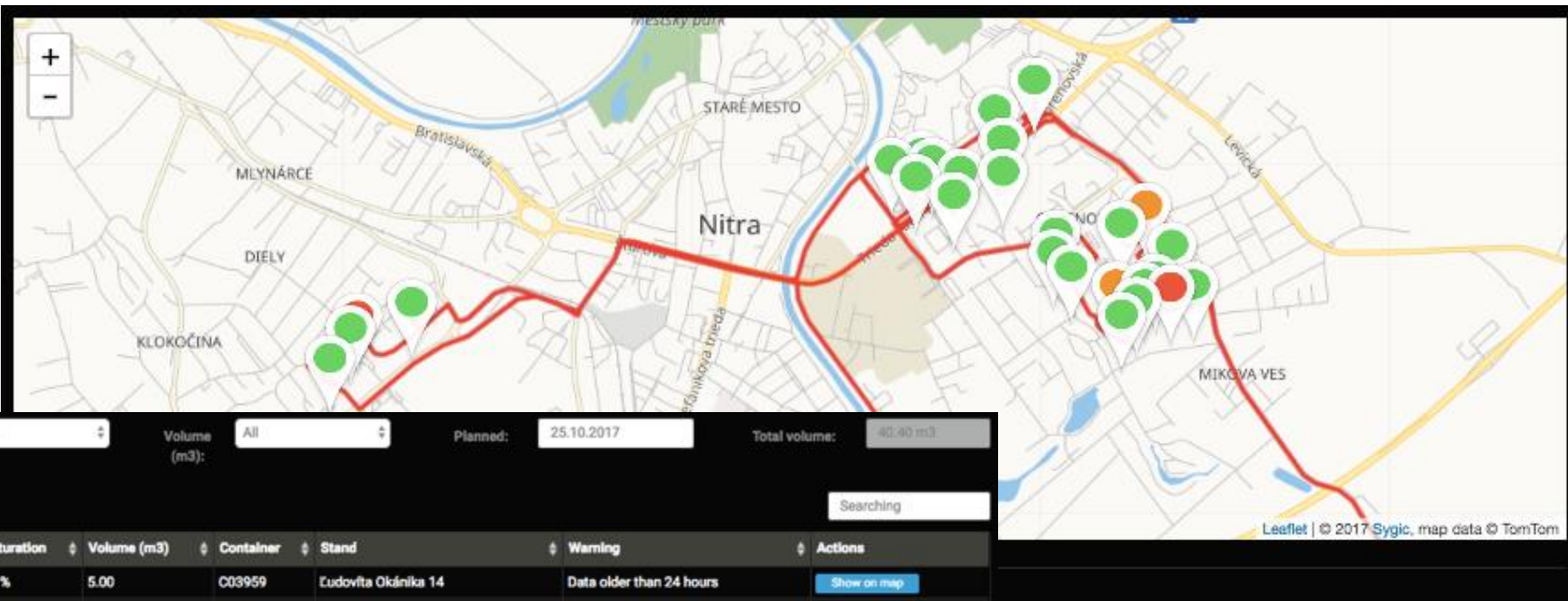
((S))

DETAIL ANALYSES ROUTES





DETAIL ROUTES PLANNING



Type: Volume: Planned: Total volume:

Searching

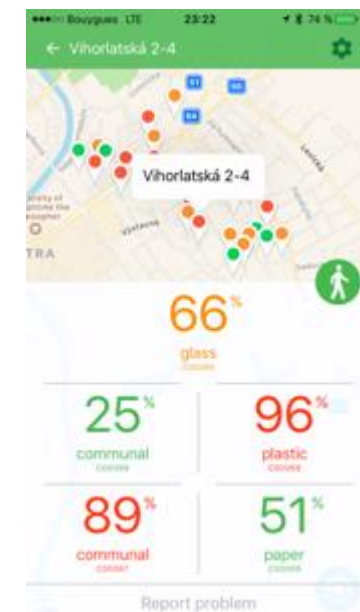
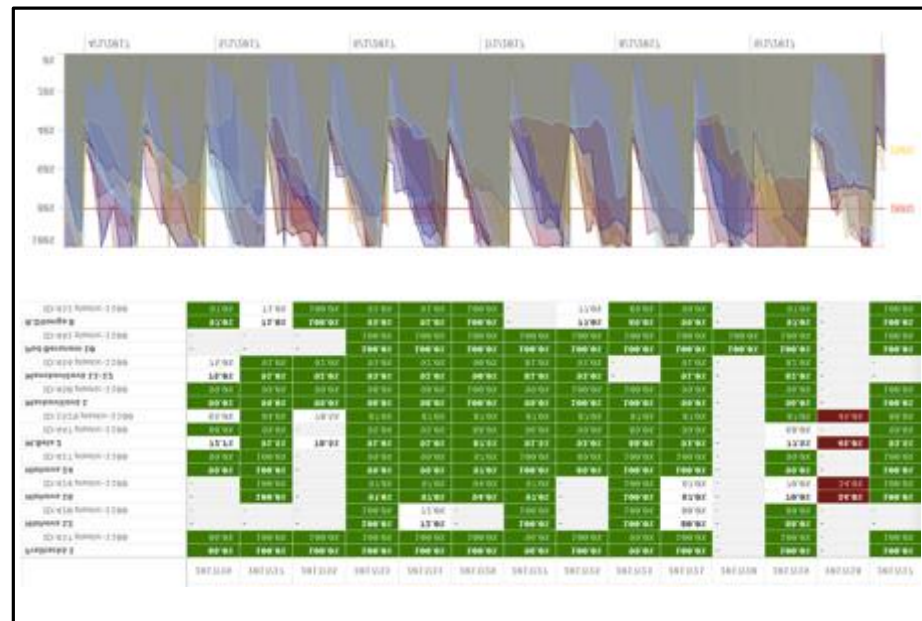
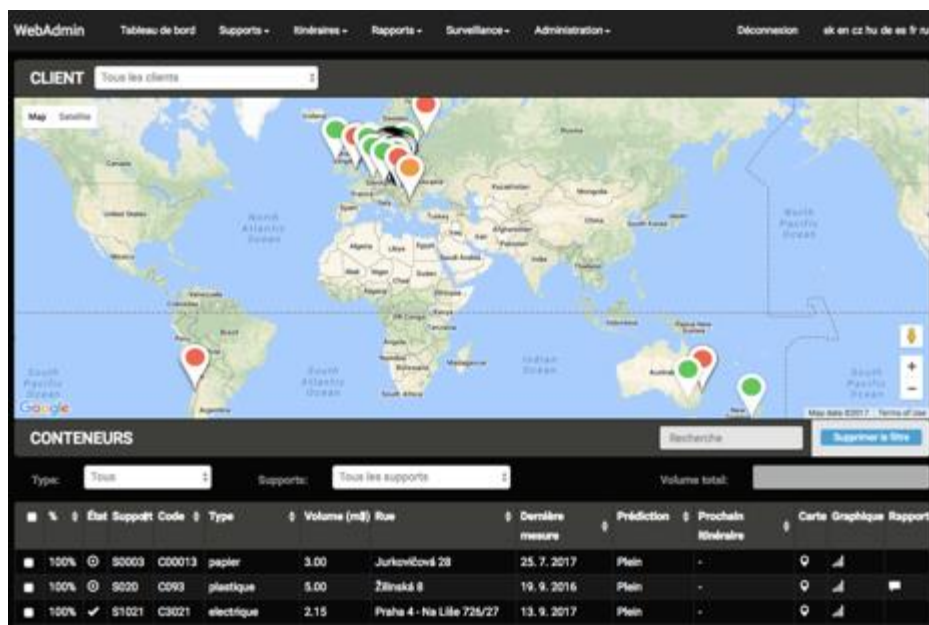
<input type="checkbox"/>	Status	Saturation	Volume (m3)	Container	Stand	Warning	Actions
<input type="checkbox"/>	🕒	22 %	5.00	C03959	Čudovíta Okánika 14	Data older than 24 hours	Show on map
<input type="checkbox"/>	🕒	100 %	3.00	C00013	Jurkovičová 28	Data older than 24 hours	Show on map
<input type="checkbox"/>	🕒	74 %	5.00	C00041	Bajkalská 4	Data older than 24 hours	Show on map
<input type="checkbox"/>	🕒	71 %	5.00	C03937	Ďumbierska 47	Data older than 24 hours	Show on map
<input type="checkbox"/>	🕒	55 %	5.00	C00064	Ďumbierska 27	Data older than 24 hours	Show on map
<input type="checkbox"/>	🕒	50 %	5.00	C00074	Lesná 2	Data older than 24 hours	Show on map
<input type="checkbox"/>	🕒	48 %	5.00	C03963	Čudovíta Okánika 2	Data older than 24 hours	Show on map
<input type="checkbox"/>	🕒	43 %	5.00	C00047	Trieda Andreja Hlinku 57	Data older than 24 hours	Show on map
<input type="checkbox"/>	🕒	43 %	5.00	C00034	Štávnická 20	Data older than 24 hours	Show on map
<input type="checkbox"/>	🕒	37 %	5.00	C00042	Trávečská 17	Data older than 24 hours	Show on map

Displayed 1 - 10 from 28 rows per page

1 2 3



OUR SOLUTION



((S))

OUR PARTNERS

CATEGORIES

NETWORK OPERATORS (TELCO, IoT)

SYSTEM INTEGRATORS

BIN PRODUCERS

REQUIREMENTS

SALES FORCE

TECHNICAL FORCE

INDUSTRY OVERLAP





www.sensoneo.com